



CAP COSTUME HALLOWEEN HARNESS DRESS PANTS PANTY XMAS SWEATER T-SHIRT VEST SHIRT

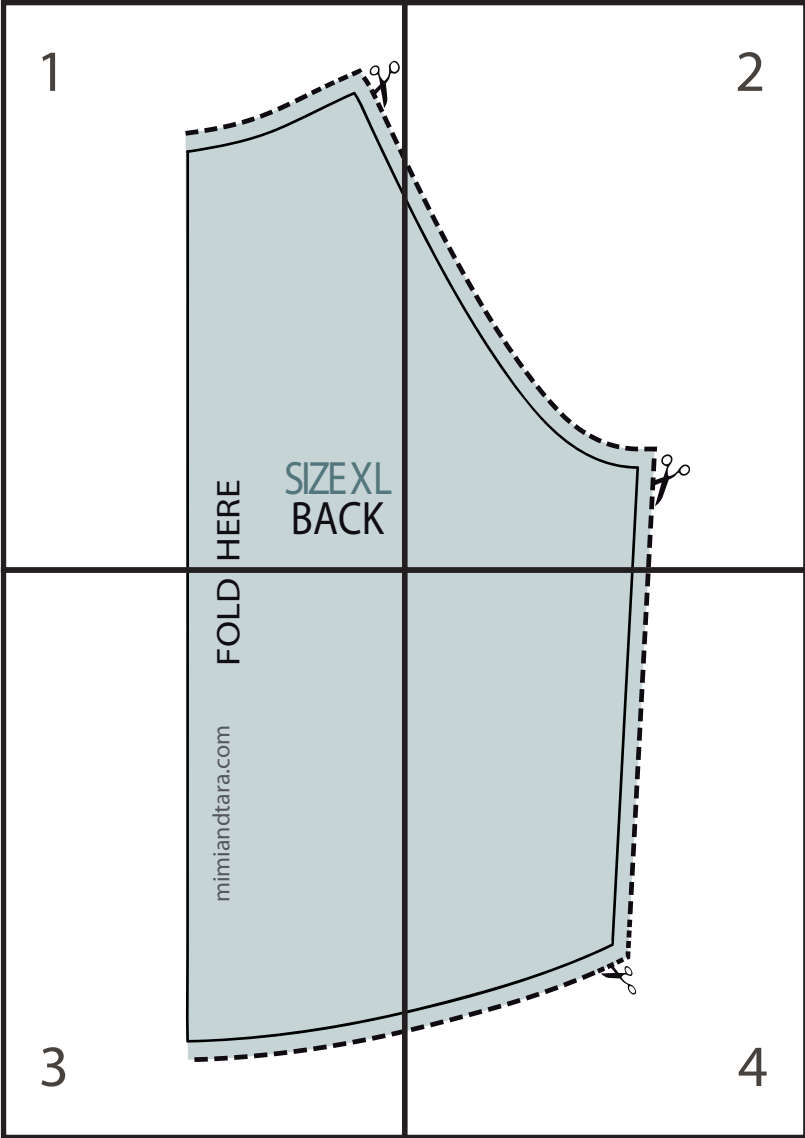


Please refer to Mimi & Tara for the sewing instructions for this Dog Sweater (Ranglan) Pattern at

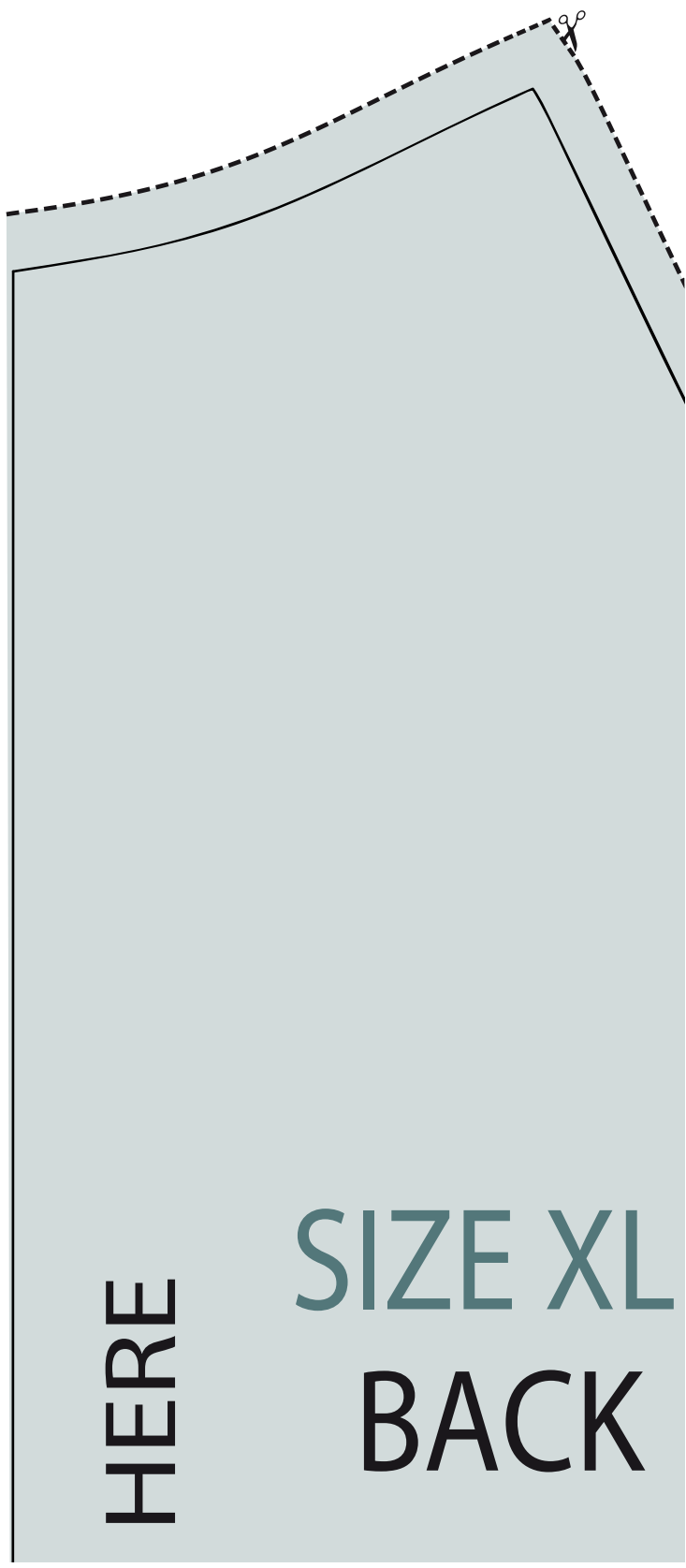
<http://www.mimiandtara.com/2011/09/dog-sweater-patterns.html>

Find more great sewing patterns at
[MimiandTara.com](http://www.mimiandtara.com)

DOG RAGLAN SWEATER

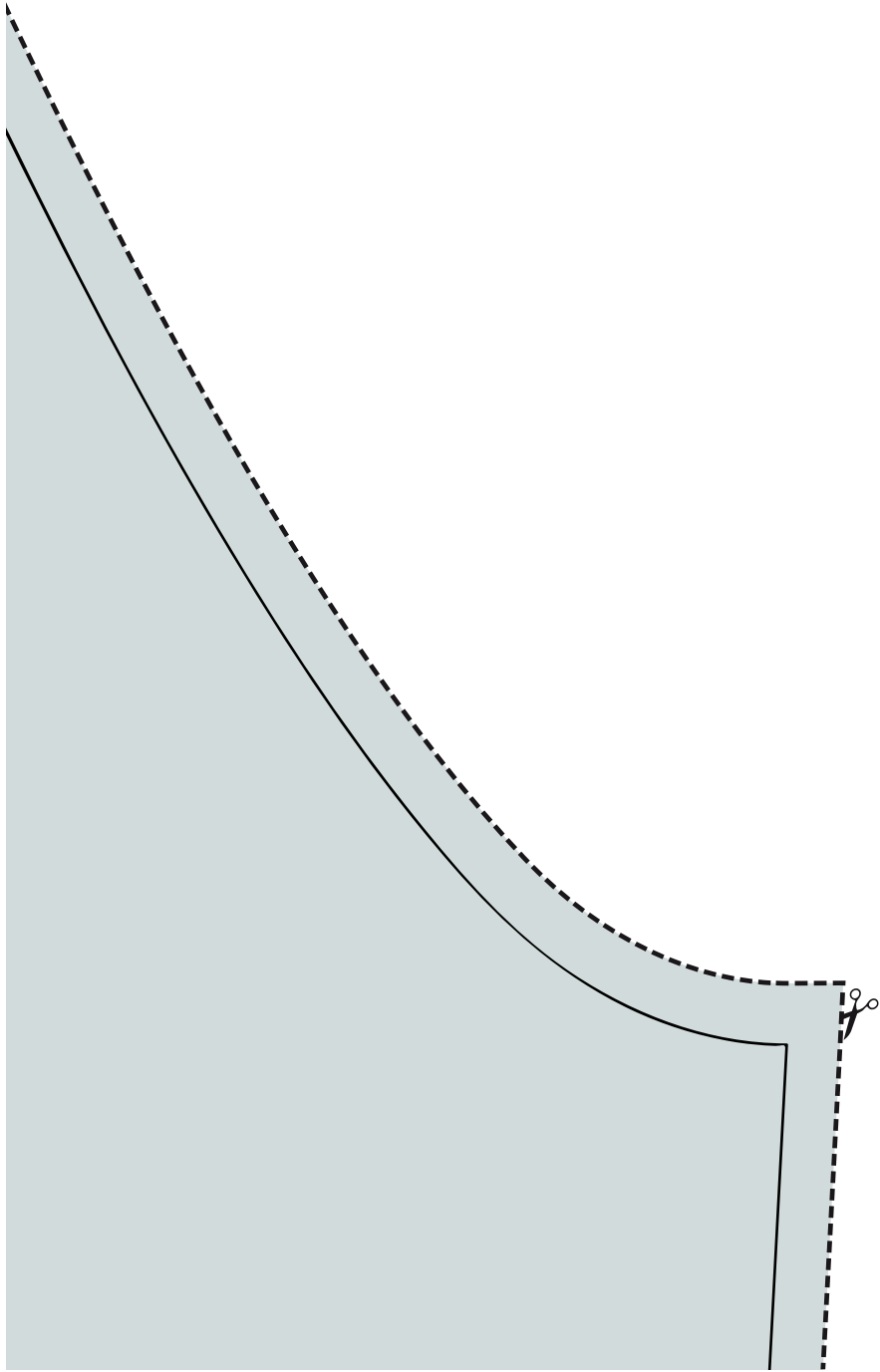


TALLA XL
BACK



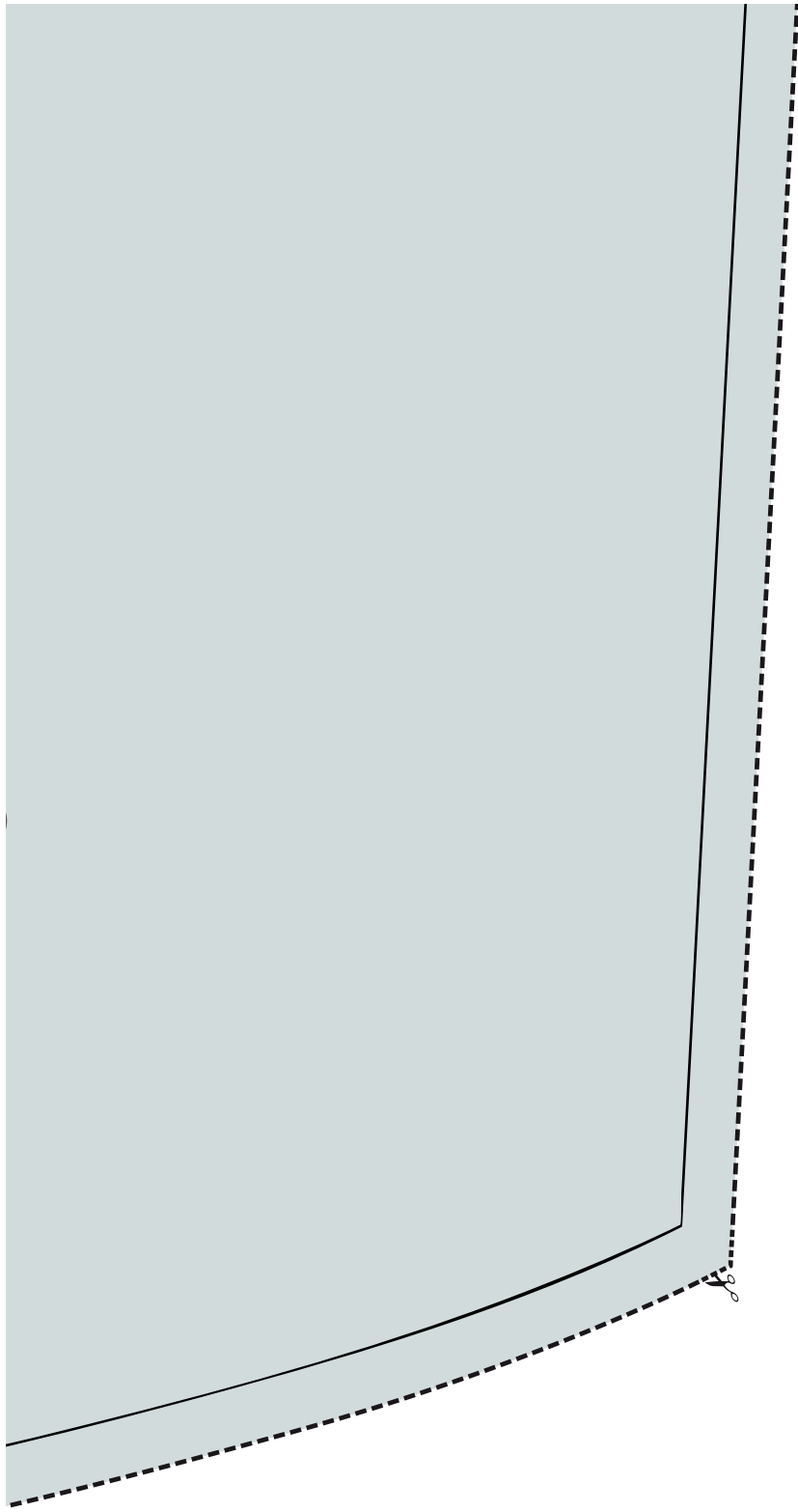
HERE

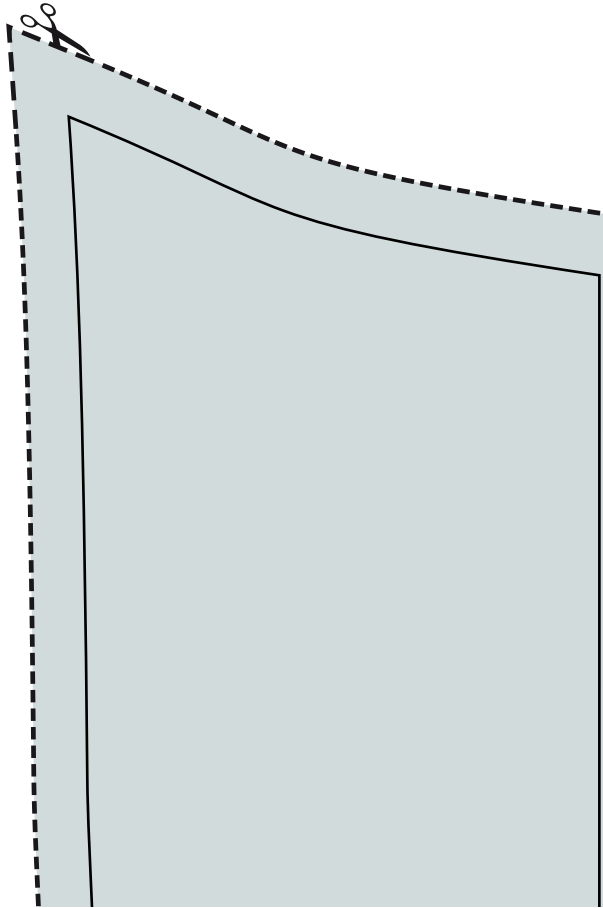
SIZE XL
BACK

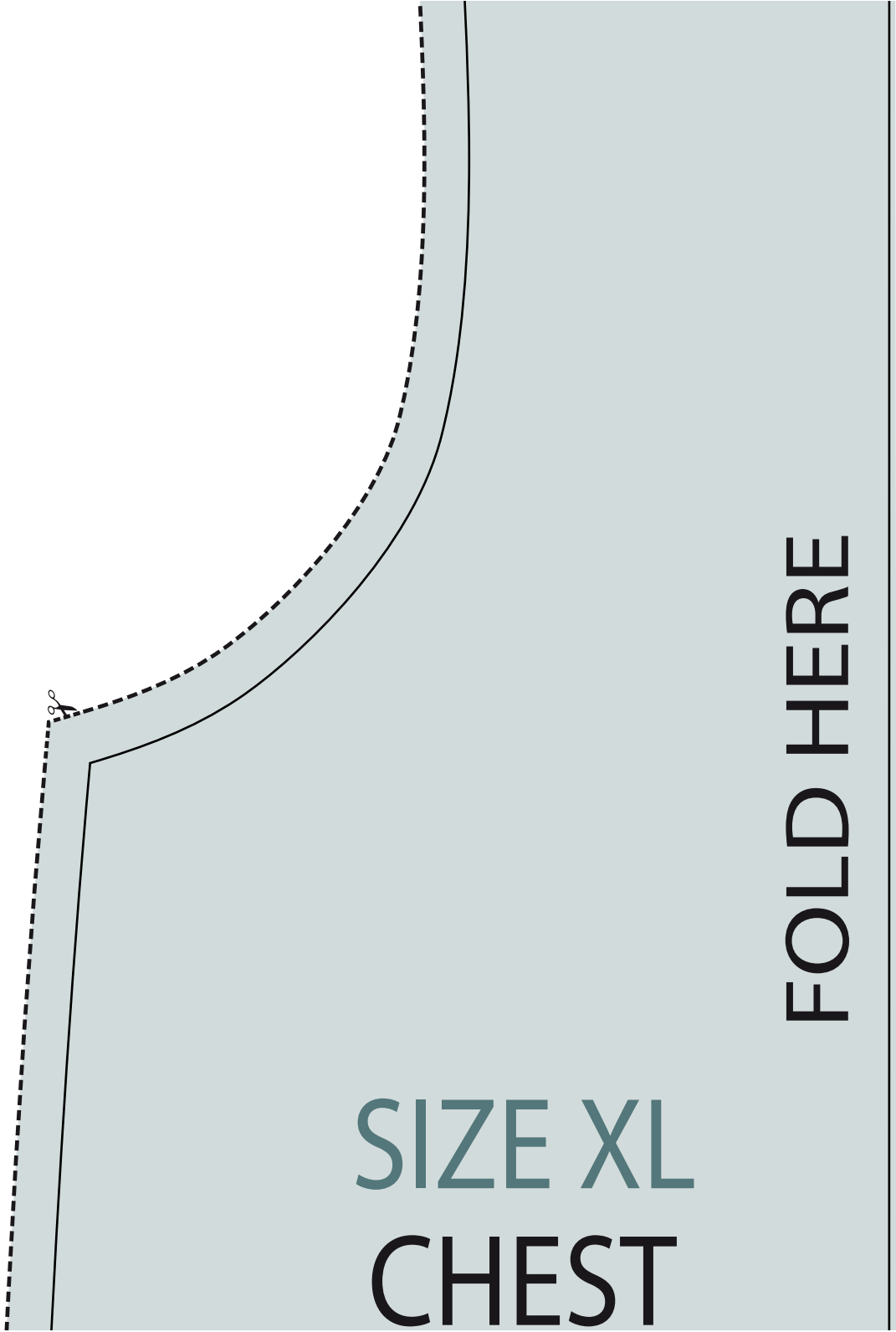


mimiandtara.com

FOLD







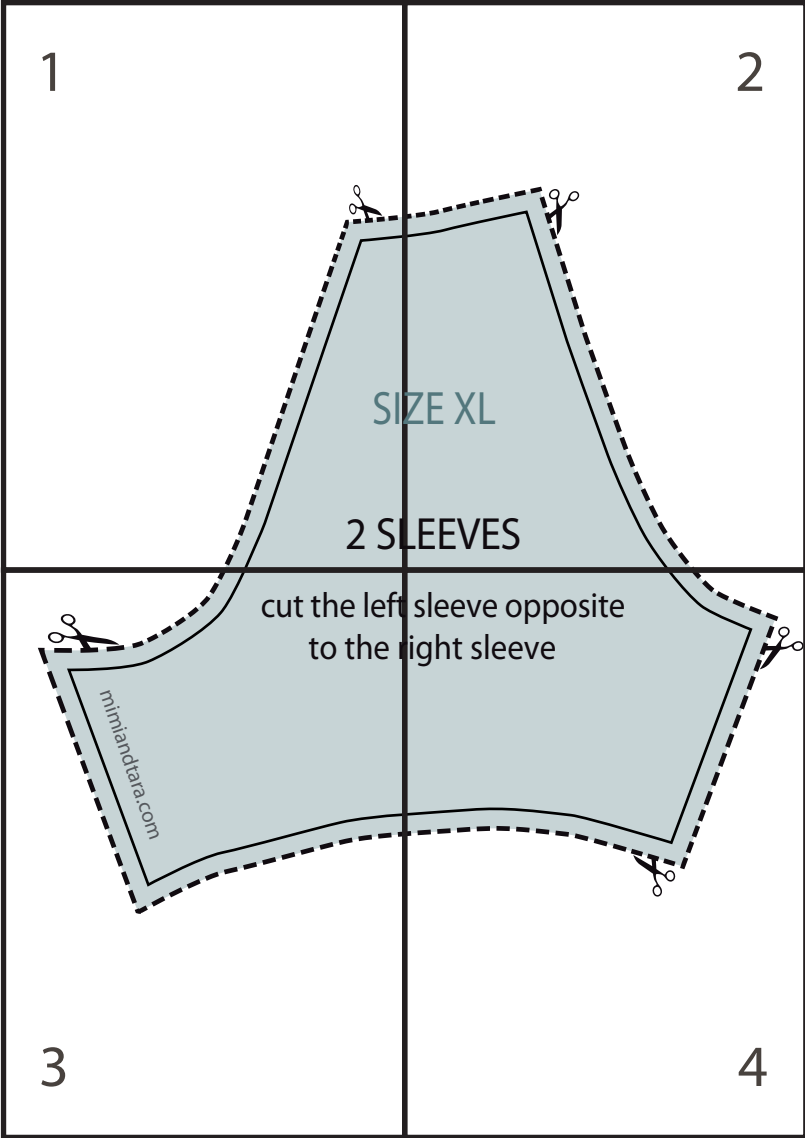
SIZE XL
CHEST

FOLD HERE

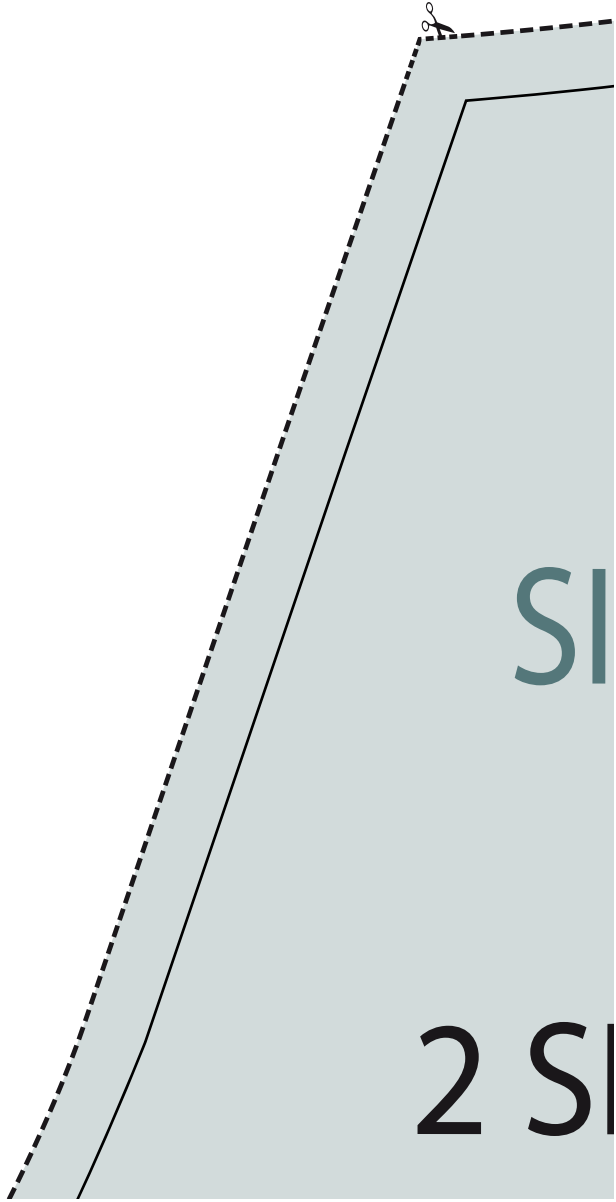


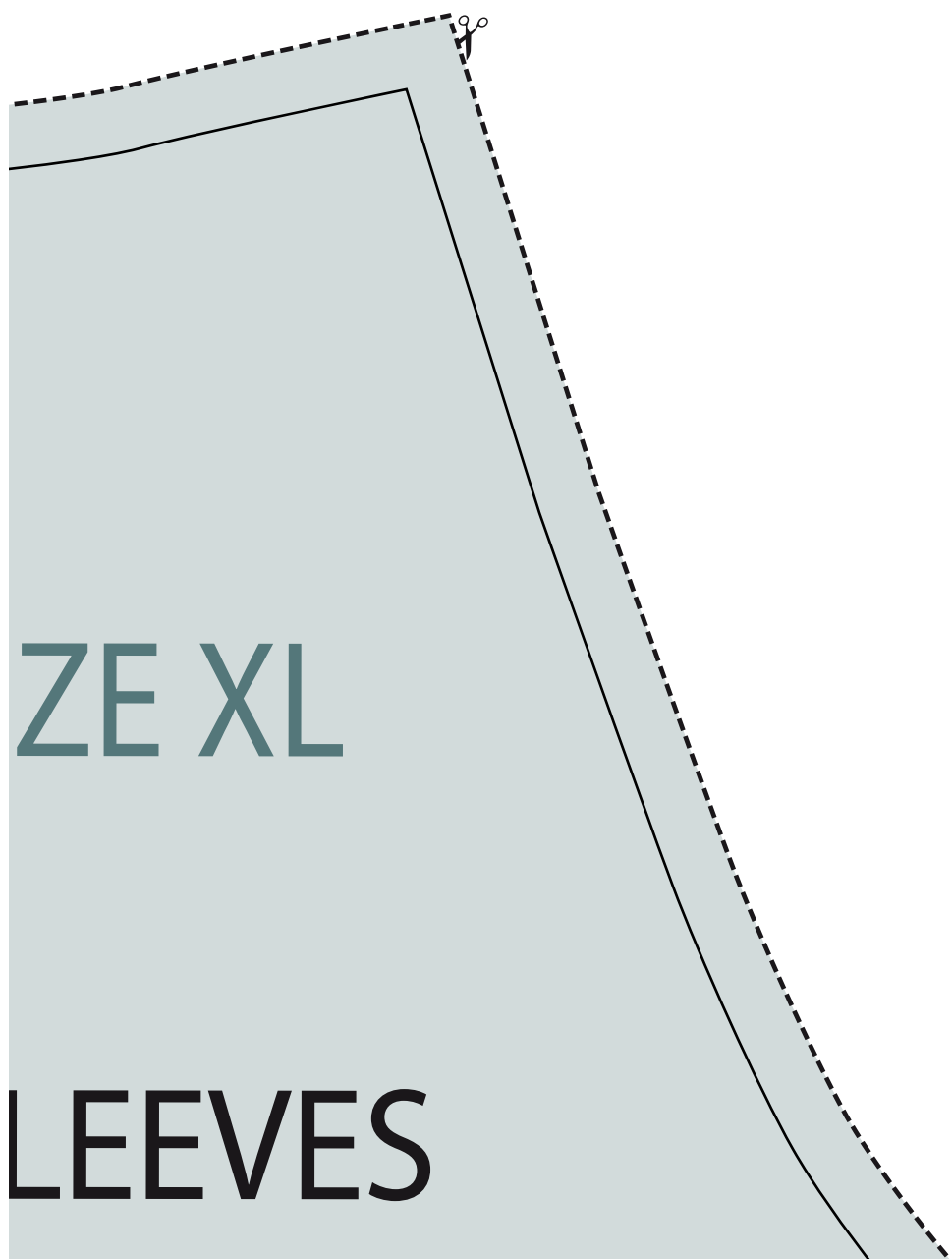
mimiandtara.com

DOG RAGLAN SWEATER



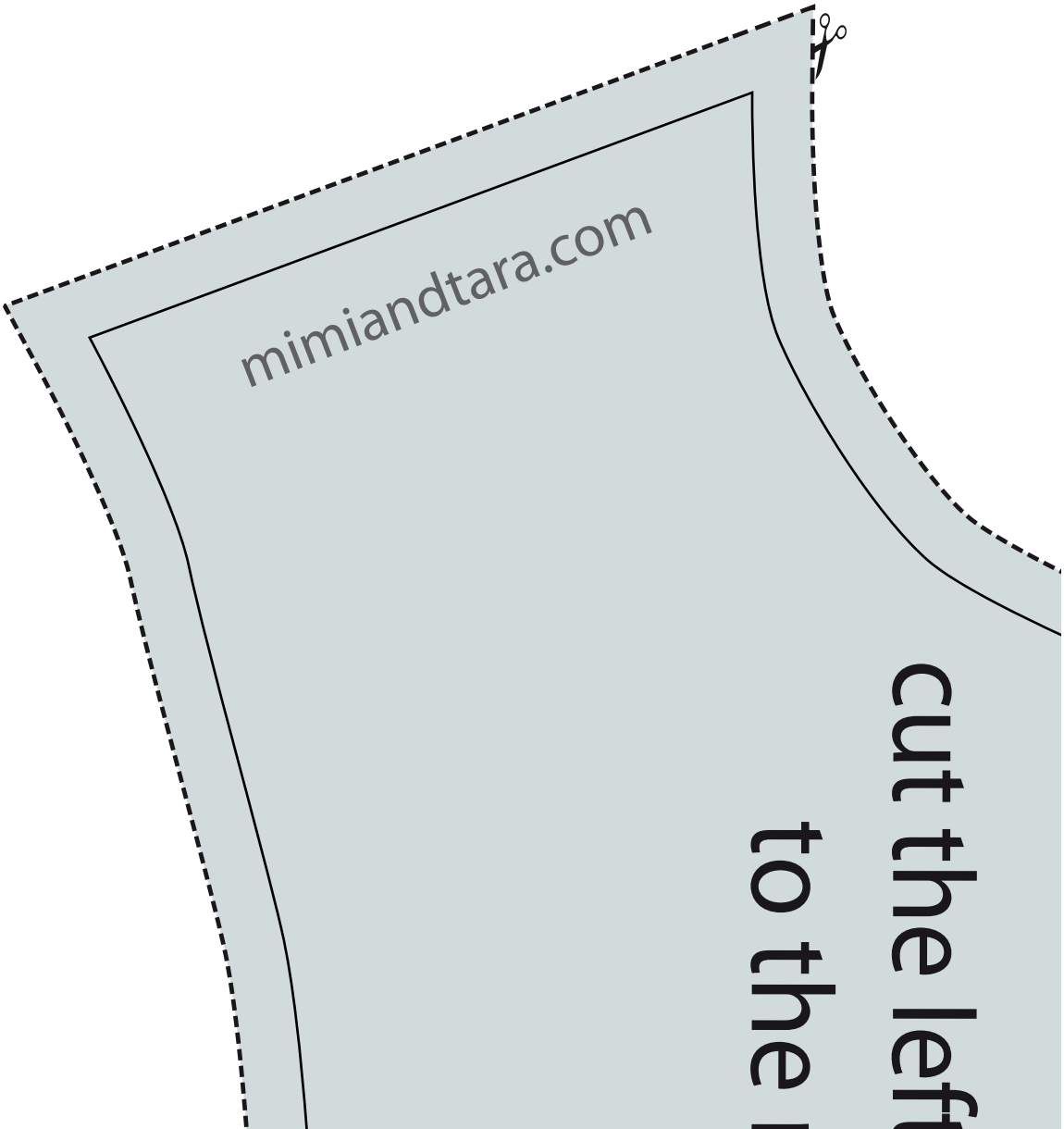
SIZE XL
SLEEVE





ZE XL

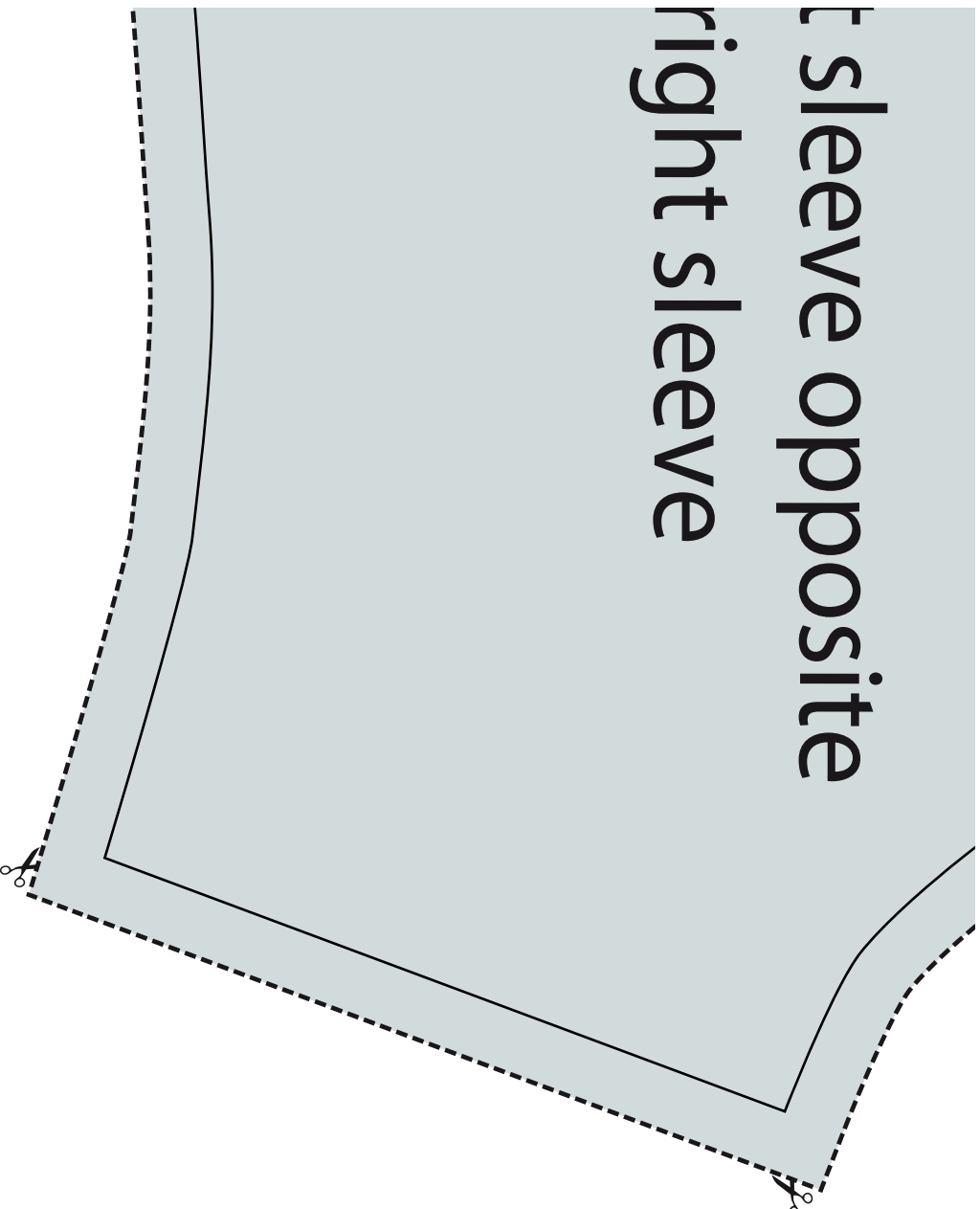
LEEVEES

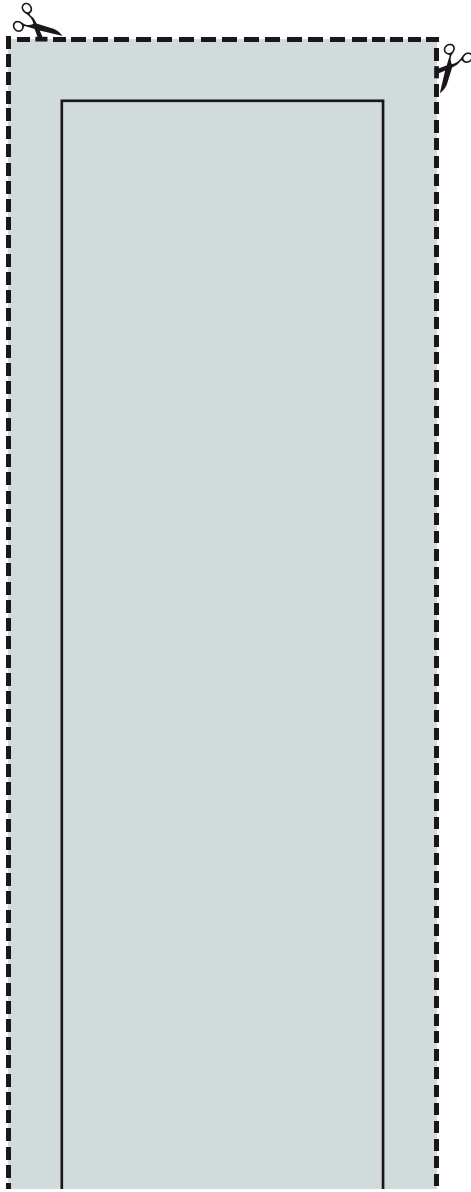


mimiandtara.com

cut the left
to the

left sleeve opposite
right sleeve





CONTINUED ↓

NECK STRIP

SIZE

CONTINUED ↓

